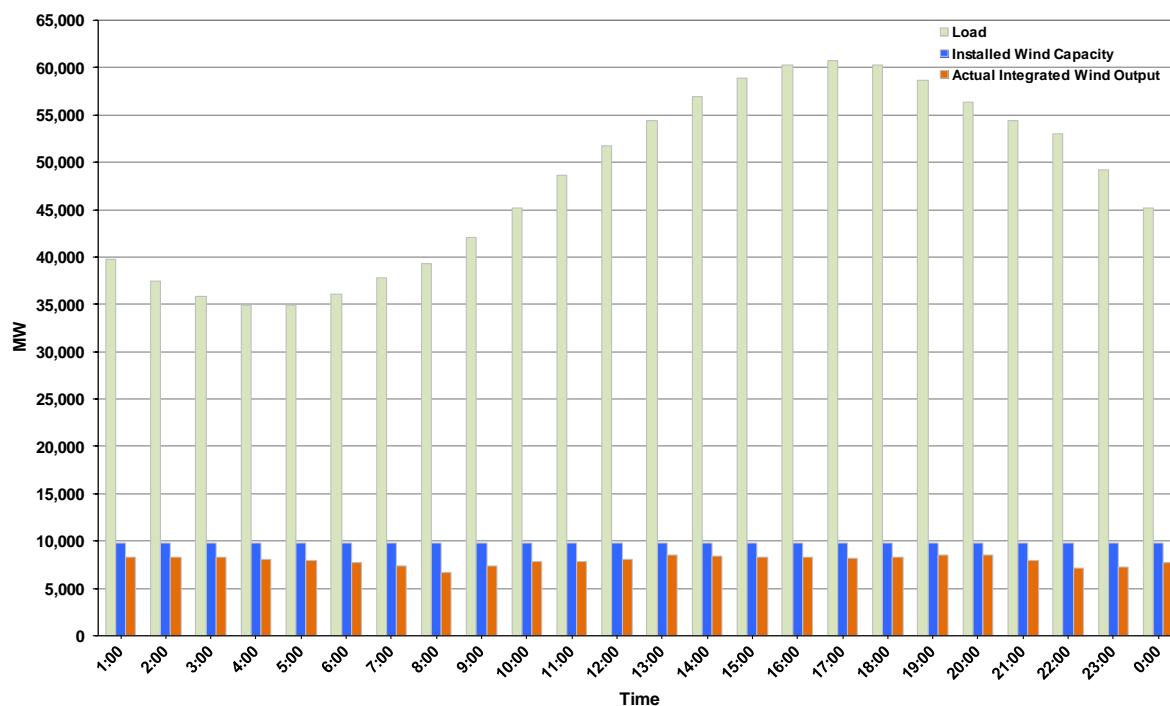




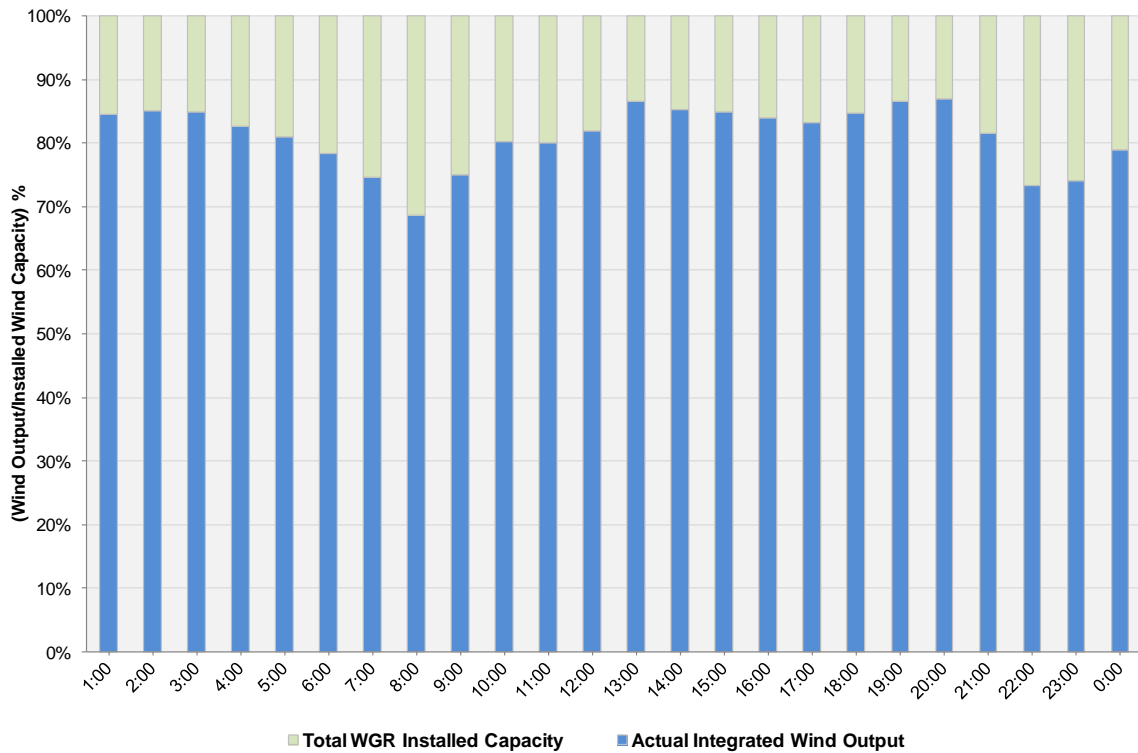
## ERCOT Grid Operations Wind Integration Report: 06/24/2013

Peak Load	<b>60,741 MW</b>
Load Peak Hour (HE)	<b>17</b>
Wind over Peak	<b>8,164 MW</b>
Wind Record 05/02/13	<b>9,674 MW</b>
Max Wind Value	<b>8,663 MW</b>
Wind Peak Time	<b>19:04</b>
Wind Integration %	<b>15.10%</b>

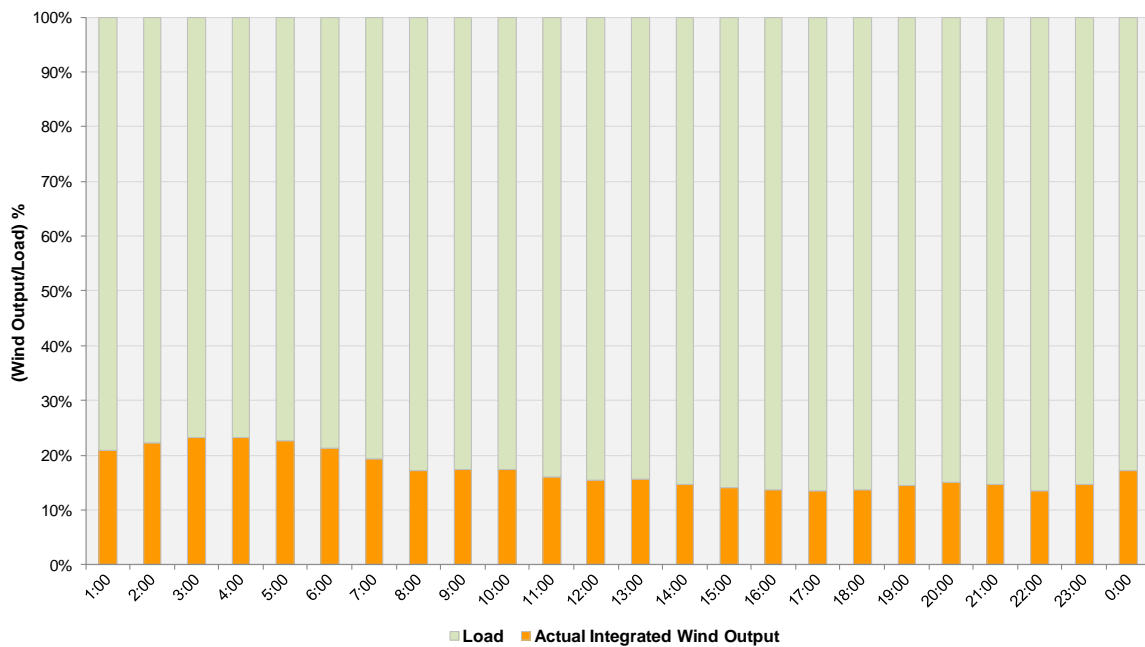
**Hourly Average Actual Load vs. Actual Wind Output  
06-24-2013**



**Actual Wind Output as a Percentage of the Total Installed Wind Capacity**  
**06-24-2013**



**Actual Wind Output as a Percentage of the ERCOT Load**  
**06-24-2013**



ERCOT Load vs. Actual Wind Output 6/17/2013 - 6/24/2013

